



PUBLIC INVOLVEMENT PLAN (PIP)

Air Quality Bureau Air Permit Application

Version 06.02.21

Date: June 11, 2021

Applicant: Freeport-McMoRan Tyrone Inc

Facility Name: Tyrone Mine

Air Quality Permit Application Number: 2448-M7, AI-527

Location: Approximately 4.5 mi SW of Tyrone, Grant County, New Mexico

Latitude: 32.650833

Longitude: -108.3675

1. Overview of Air Quality Bureau's plan of action for addressing the community's needs and concerns for processing Air Quality Permit Applications:

The New Mexico Environment Department (Department), Air Quality Bureau (AQB) developed this Public Involvement Plan (PIP) for the processing of air quality permit applications in accordance with the requirements at 20.2.72 NMAC for this facility. This air quality regulation does require public participation outreach throughout different stages of the permitting process. The AQB will meet the public participation requirements by following this PIP, which includes all applicable policy, regulatory and statutory public participation requirements.

In developing this PIP, community participation needs for this permitting action were assessed to ensure appropriate promotion of public outreach by identifying whether there is a combination of environmental and demographic factors (i.e., low income community, minority community, limited English proficiency individuals, Linguistically Isolated Households, etc.) that may impact public participation. This assessment identifies community outreach needs and provides for public access opportunities above and beyond statutorily mandated requirements, and underscores the provision of adequate public access to information about this permit application.

As much as possible, public participation and informational activities related to this permit application will be held within the regulatory timelines outlined below.

- a. AQB regulations at 20.2.72 NMAC require that the application must be ruled complete or incomplete no more than 30 days after receipt, and that a public notice for this application must be published in a newspaper of general circulation where the facility is located. See section 4.c below for more information.

The public notice contains a paragraph in Spanish directing Spanish speaking interested parties to call the AQB at (505) 476-5557 to speak to Spanish speaking staff for additional information regarding this permitting action.

- b. Normally the AQB would provide a copy of the public notice, the air quality permit application, and this PIP to the Silver City NMED field office, but due to current Covid-19 access restrictions for protection of both public employees and the protection of the general public these materials are instead available on the NMED website (see section 2.a).

- c. AQB regulations require that the public notice be sent to interested parties maintained on a mailing list. See Section 4.b below for more information.
- d. AQB regulations require that the public notice be sent to the “appropriate agency” as defined at 20.2.72 NMAC (as applicable). See Section 4.e below for more information.
- e. In accordance with the evaluation of the site location and associated demographics, no additional means for disseminating information are planned at this time.
- f. Public notice shall be followed by a 30-day public comment period that starts on the day that the notice is published in the newspaper. See Section 4.g below for details.
- g. AQB regulations require that the permit must be issued, issued subject to conditions, or denied within ninety (90) days after the department deems the application administratively complete.

2. Contact list of AQB staff with phone numbers and email addresses:

a. AQB contact for questions about this application or PIP (included in public notices and outreach materials):

Joseph Kimbrell
New Mexico Environment Department
Air Quality Bureau
525 Camino de los Marquez, Suite 1
Santa Fe, New Mexico, 87505
505-476-4347
Joseph.Kimbrell@state.nm.us

Electronic copies will be available at the following link, which will be included in public notices and outreach materials as appropriate: <https://www.env.nm.gov/air-quality/aqb-p-current-permitting-activities/>

b. Non-English Language Speaker Assistance and Accommodations

The AQB may hold public meetings, open houses, stakeholder meetings, and/or a formal hearing depending on the interest in the application. Language assistance services may be arranged for translation of documents for meetings, for translators during meetings and for obtaining services for persons with disabilities. A phone-based interpretation service may be available for languages other than English.

3. Description of the community/stakeholder groups:

To provide for adequate public participation opportunities and meaningful involvement of persons regarding this permit application and to address potential or existing environmental justice areas, the affected communities must first be identified, informed about proposed environmental actions affecting the community, and invited to share their comments and concerns. The EISCREEN tool developed by the U.S. Environmental Protection Agency (EPA) helps identify communities that are low income and minority populations that may benefit from a variety of approaches for notification and outreach communication.

Using the 15.5 mile (radius for this large facility) from the facility, the results of the EJScreen ACS Summary Report (attached) are listed in the table below. [<https://ejsscreen.epa.gov/mapper/>]

Population and Income Data			
Total Population:	20,661	Per capita income of community (2014-2018):	\$23,440
People of Color Population, %:	55	US Per Capita Income*:	\$34,103
Total number of households:	8,611	Total Number (and Percent) of Linguistically Isolated Households:	138 (1.6%)

*US Per Capita Income 2015-2019; <https://www.census.gov/quickfacts/fact/table/US/INC910219>

Population by Race, %		Population by Ability to Speak English, %	
White	93	Speak Only English	71
Black	1	Non-English at Home	29
American Indian	3	Speak English "very well"	26
Asian	0	Speak English "well"	2
Pacific Islander	0	Speak English "not well"	1
Some Other Race	1	Speak English "not at all"	0
Two or More Races	2	Speak English "less than very well"	3

Linguistically Isolated Household Details, %		List other Languages (if applicable)
Speak Spanish	100	////////////////////////////////////
Speak Other Indo-European Languages	0	
Speak Asian Pacific Island Languages	0	
Speak Other Languages	0	

In addition, the following community or stakeholder groups have been identified:

Allyson Siwik, Executive Director
 Gila Resources Information Project
 305A N. Cooper St., Silver City, NM 88061

History of public involvement in air permitting during the last 10 years: none.

It is important for the AQB to incorporate the linguistic and communication needs of this community when conducting public outreach and participation activities. To help accomplish this, the AQB will provide information in English, in public comment notices, public meeting notices (if applicable), and other announcements (radio broadcasts, brochures, signs, postcards, etc.) and strive to make public participation efforts as inclusive as possible within AQB budget and time limitations. The Silver City will serve as access areas for the AQB to leave hard copies of important documents and information about how to comment on this permit application.

4. Detailed actions and outreach activities the AQB Permitting Section will take to reach the affected public:

a. Overview

Based on the demographics report discussed in the PIP, the history of public involvement at the facility and the facility background, basic information about public involvement opportunities will be

in English. This information will include how to request materials in Spanish or to speak with AQB staff through an interpreter. Further details about public participation for this activity are outlined below.

The AQB maintains information regarding this air quality permit application at the following locations:

- i. **On the Air Quality Bureau website, see Section 2.a above. [Due to Covid-19 restrictions materials will not be available at ii and iii below but will be available on the website]:**
- ii. **At the District Office listed in Section 1.b above.**
- iii. **At the main office location:**
New Mexico Environment Department
Air Quality Bureau
525 Camino de los Marquez, Suite 1
Santa Fe, New Mexico, 87505

b. Postal Mailing or E-Mailing of Notices to Persons on the Facility-Specific Mailing List

AQB regulations require notification to persons who have expressed interest in applications. The AQB maintains a mailing list that includes individuals interested in permit applications from particular facilities or geographic areas. Notifications may be sent through physical mail and/or an email.

The list also includes addresses within fifty kilometers of the boundary of other states, Bernalillo county, or a Class I area.

c. Notices in the State Newspaper and Local Newspapers

The public notice for this permit application will be published in English in the Legal Section of the Silver City Daily Press newspaper.

Website for this publication is listed below: Silver City Daily Press:

English: <http://www.scdailypress.com/>

d. Mailing to the Governor or President of Indian Tribes, Pueblos or Nations

AQB regulations and the evaluation of the facility location and associated demographics, require notification to Tribes, Pueblos or Nations about this permit application for facilities located within a specified distance.

The Department does not do this notification for NSR permits. Notification to Indian Tribes, Pueblos or Nations within 10 miles is required from the applicant for the NSR.

e. Affected Local, State, or Federal Government Agencies, and Active Land Grants

AQB regulations require identifying and notifying local, state or federal government agencies about this permit application.

The following affected Local, State, or Federal Government Agencies will be notified by email:

US EPA Region VI, Elizabeth (Mary) Layton at r6airpermits@epa.gov & layton.mary@epa.gov

Forestry Service, USDA Anita Rose - anita.rose@usda.gov, Class I Gila Wilderness Area

Colonias located within a 15.5-mile radius of the facility: Rosedale; Santa Clara; Bayard; Arenas Valley, Mocking bird Sub, North Hurley, White Signal, Mangas, Bear Mountain, Cottage San, Central, and Vanadium.

f. Public Meeting Notices, Public Comment Notices, and Other Notices

AQB may hold public meetings, open houses, stakeholder meetings, and/or a formal hearing depending on the interest in the application. Based on historical information and the results of the initial screening, there is no public meeting planned at this time for this permit application. If it is determined that a public meeting will be required, notice will be provided to the community as follows:

- 1) Via a newspaper of general circulation in the area closest to the location of the facility.
- 2) Locations commonly frequented by the general public, such as a nearby post office, public library, or city hall.
- 3) All persons and organizations that have expressed interest and are on a list maintained by AQB.
- 4) Via a public service announcement to at least one radio or television station which serves the municipality or county in which the source is or is proposed to be located.
- 5) The notices will be translated for non-English speaking participants, if required.
- 6) The notices will include information for requesting accommodations for those with disabilities as listed in item 2b above.

AQB will locate an appropriate venue based on the availability to the community to access the meeting, and the specific needs of the affected community (e.g. size of community, community locations, impacts, etc.).

AQB may reschedule the meeting due to inclement weather. If rescheduled, AQB will provide as much advance notice as possible and reschedule for an appropriate time and date.

Meetings will be scheduled to make them as accessible and user-friendly as practical, considering work schedules, dinner hours and other community commitments. To the extent possible, the meeting will be held at a location that is local and convenient, and meet American with Disabilities Act (ADA) standards. In addition, whenever practical and appropriate, translators for limited-English speaking communities, or assistance for hearing-impaired individuals may be available. Information in public notices for a public meeting will adhere to AQB regulations, statutes and policies.

g. Public Comment Periods

AQB regulations require that all interested persons have thirty (30) days from the date the public notice is published to express an interest in writing in the permit application. If AQB receives written public comment before the end of the thirty (30) day public comment period, the analysis of the application will be made available for review for thirty (30) days on the Air Quality Bureau Website and at the NMED District office (address listed in Section 1.b above).

The PIP has been reviewed and approved by the AQB Bureau Chief.

For Liz Bisbey-Kuehn
Bureau Chief
Air Quality Bureau

Date approved

Attachments: EJSCREEN Printout

Location: User-specified point center at 32.650833, -108.367500
 Ring (buffer): 15.5-miles radius
 Description: Tyrone Mine, 15.5 mile radius

Summary of ACS Estimates		2014 - 2018
Population		20,661
Population Density (per sq. mile)		65
People of Color Population		11,375
% People of Color Population		55%
Households		8,611
Housing Units		10,423
Housing Units Built Before 1950		1,334
Per Capita Income		23,440
Land Area (sq. miles) (Source: SF1)		316.94
% Land Area		100%
Water Area (sq. miles) (Source: SF1)		0.38
% Water Area		0%

	2014 - 2018 ACS Estimates	Percent	MOE (±)
Population by Race			
Total	20,661	100%	663
Population Reporting One Race	20,240	98%	1,168
White	19,223	93%	634
Black	151	1%	120
American Indian	536	3%	208
Asian	40	0%	47
Pacific Islander	6	0%	12
Some Other Race	284	1%	147
Population Reporting Two or More Races	422	2%	128
Total Hispanic Population	10,545	51%	468
Total Non-Hispanic Population	10,117		
White Alone	9,287	45%	483
Black Alone	112	1%	120
American Indian Alone	460	2%	195
Non-Hispanic Asian Alone	28	0%	45
Pacific Islander Alone	6	0%	12
Other Race Alone	17	0%	23
Two or More Races Alone	208	1%	84
Population by Sex			
Male	10,013	48%	381
Female	10,648	52%	420
Population by Age			
Age 0-4	1,312	6%	167
Age 0-17	4,427	21%	338
Age 18+	16,235	79%	534
Age 65+	5,190	25%	295

Data Note: Detail may not sum to totals due to rounding. Hispanic population can be of any race.

N/A means not available. **Source:** U.S. Census Bureau, American Community Survey (ACS) 2014 - 2018

Location: User-specified point center at 32.650833, -108.367500
 Ring (buffer): 15.5-miles radius
 Description: Tyrone Mine, 15.5 mile radius

	2014 - 2018 ACS Estimates	Percent	MOE (±)
Population 25+ by Educational Attainment			
Total	14,507	100%	449
Less than 9th Grade	862	6%	157
9th - 12th Grade, No Diploma	1,180	8%	162
High School Graduate	3,414	24%	257
Some College, No Degree	4,882	34%	305
Associate Degree	1,228	8%	158
Bachelor's Degree or more	4,169	29%	291
Population Age 5+ Years by Ability to Speak English			
Total	19,349	100%	610
Speak only English	13,764	71%	506
Non-English at Home ¹⁺²⁺³⁺⁴	5,585	29%	395
¹ Speak English "very well"	4,964	26%	391
² Speak English "well"	358	2%	99
³ Speak English "not well"	194	1%	57
⁴ Speak English "not at all"	70	0%	42
³⁺⁴ Speak English "less than well"	263	1%	62
²⁺³⁺⁴ Speak English "less than very well"	621	3%	114
Linguistically Isolated Households*			
Total	138	100%	43
Speak Spanish	138	100%	41
Speak Other Indo-European Languages	0	0%	17
Speak Asian-Pacific Island Languages	0	0%	17
Speak Other Languages	0	0%	17
Households by Household Income			
Household Income Base	8,611	100%	278
< \$15,000	1,623	19%	189
\$15,000 - \$25,000	1,238	14%	150
\$25,000 - \$50,000	2,372	28%	214
\$50,000 - \$75,000	1,216	14%	143
\$75,000 +	2,162	25%	221
Occupied Housing Units by Tenure			
Total	8,611	100%	278
Owner Occupied	5,938	69%	257
Renter Occupied	2,672	31%	216
Employed Population Age 16+ Years			
Total	16,744	100%	538
In Labor Force	8,696	52%	463
Civilian Unemployed in Labor Force	684	4%	133
Not In Labor Force	8,048	48%	362

Data Note: Detail may not sum to totals due to rounding. Hispanic population can be of anyrace.

N/A means not available. **Source:** U.S. Census Bureau, American Community Survey (ACS)

*Households in which no one 14 and over speaks English "very well" or speaks English only.

Location: User-specified point center at 32.650833, -108.367500

Ring (buffer): 15.5-miles radius

Description: Tyrone Mine, 15.5 mile radius

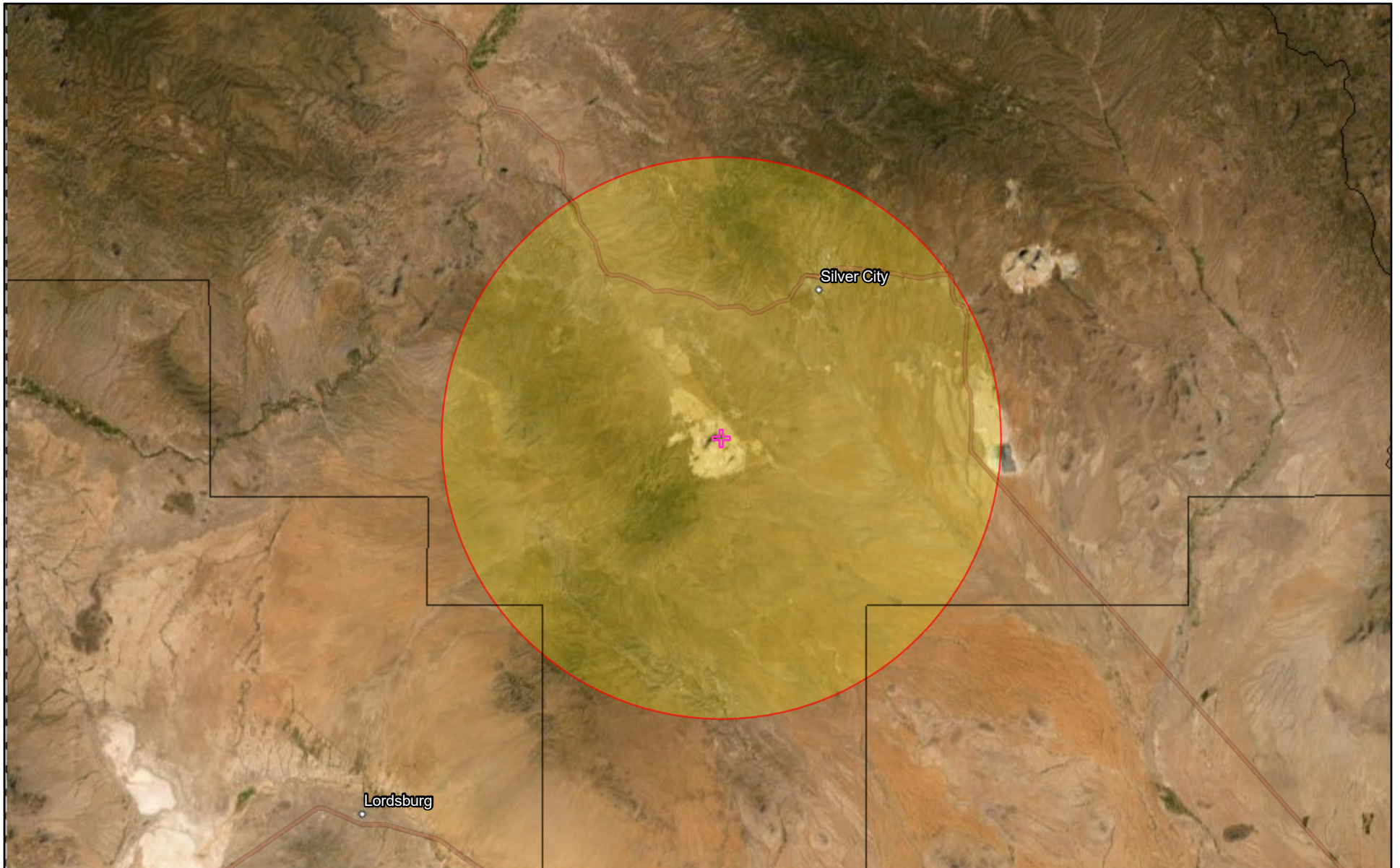
	2014 - 2018 ACS Estimates	Percent	MOE (±)
Population by Language Spoken at Home*			
Total (persons age 5 and above)	19,349	100%	610
English	13,764	71%	507
Spanish	5,242	27%	436
French	36	0%	44
French Creole	N/A	N/A	N/A
Italian	N/A	N/A	N/A
Portuguese	N/A	N/A	N/A
German	58	0%	84
Yiddish	N/A	N/A	N/A
Other West Germanic	N/A	N/A	N/A
Scandinavian	N/A	N/A	N/A
Greek	N/A	N/A	N/A
Russian	N/A	N/A	N/A
Polish	N/A	N/A	N/A
Serbo-Croatian	N/A	N/A	N/A
Other Slavic	N/A	N/A	N/A
Armenian	N/A	N/A	N/A
Persian	N/A	N/A	N/A
Gujarathi	N/A	N/A	N/A
Hindi	N/A	N/A	N/A
Urdu	N/A	N/A	N/A
Other Indic	N/A	N/A	N/A
Other Indo-European	34	0%	44
Chinese	8	0%	17
Japanese	N/A	N/A	N/A
Korean	0	0%	17
Mon-Khmer, Cambodian	N/A	N/A	N/A
Hmong	N/A	N/A	N/A
Thai	N/A	N/A	N/A
Laotian	N/A	N/A	N/A
Vietnamese	0	0%	17
Other Asian	14	0%	17
Tagalog	0	0%	17
Other Pacific Island	N/A	N/A	N/A
Navajo	N/A	N/A	N/A
Other Native American	N/A	N/A	N/A
Hungarian	N/A	N/A	N/A
Arabic	0	0%	17
Hebrew	N/A	N/A	N/A
African	N/A	N/A	N/A
Other and non-specified	194	1%	124
Total Non-English	5,585	29%	793

Data Note: Detail may not sum to totals due to rounding. Hispanic population can be of any race.

N/A means not available. **Source:** U.S. Census Bureau, American Community Survey (ACS) 2014 - 2018.

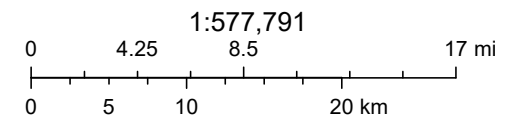
*Population by Language Spoken at Home is available at the census tract summary level and up.

Tyrone Mine, 32.650833, -108.3675



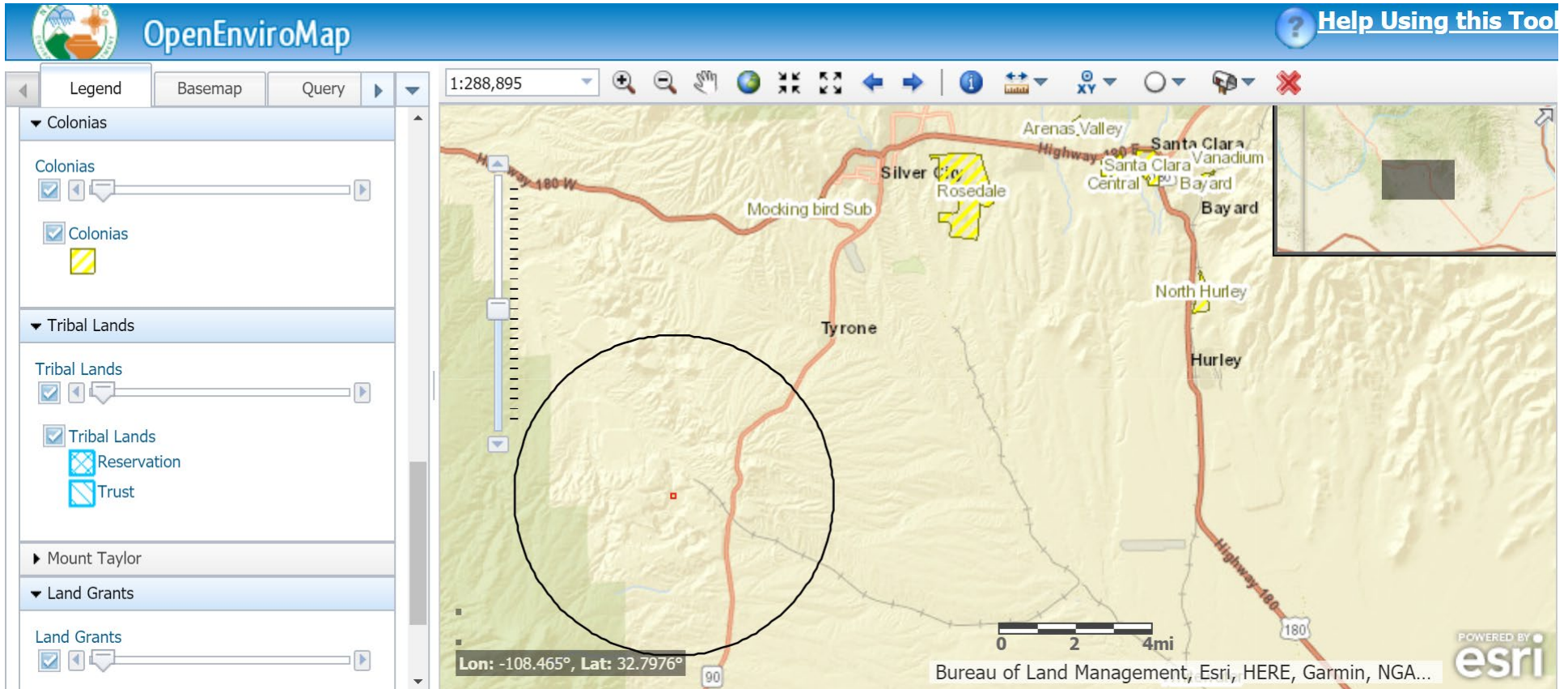
6/11/2021

- Counties
- EPA Tribal Areas (2 of 4): Alaska Native Villages
- EPA Tribal Areas (3 of 4): Alaska Reservations
- EPA Tribal Areas (1 of 4): Lower 48 States
- Tyrone Mine, 15.5 mile radius
- Search Result (point)



Source: Esri, Maxar, GeoEye, Earthstar Geographics, CNES/Airbus DS, USDA, USGS, AeroGRID, IGN, and the GIS User Community, Sources: Esri,

Tyrone Mine, 32.650833, -108.3675, 4-mile radius



15.5 mile radius

The screenshot displays the OpenEnviroMap web application interface. The main map shows a topographic view of the Lordsburg, New Mexico area, with a black circle indicating a 15.5-mile radius centered on a red square marker. The map includes labels for various locations such as Buckhorn, Cliff Gila, Riverside, Mangas, Bear Mountain, Cottage San Arenas, Valley, Santa Rita, San Lorenzo, San Juan, Mocking bird Sub, Rosedale, Santa Clara, North Hurley, White Signal, Whitewater, Faywood, Dwyer, Redrock, Viriden, Duncan, Carlisle, Lordsburg, and Keeler Farm. Major roads like 78, 70, 90, and 26 are also visible. The interface features a legend on the left with sections for Colonias, Tribal Lands, Mount Taylor, and Land Grants. The top toolbar includes navigation and map controls, and a scale bar at the bottom indicates distances up to 20 miles. The Esri logo and text "POWERED BY esri" are visible in the bottom right corner.

